

ATHLETIC FIELD PLANNING REPORT



ADMINISTRATIVE ATHLETIC FIELD PLANNING COMMITTEE



APRIL 24, 2006



MEMBERS: Rick Beattie, Director of the Recreation Department
Bill Stroud, Principal at East High School
Kristin Bowers, Principal at West High School
Joe Vitrano, Athletic Director at East High School
Linda Vitrano, Athletic Director at East High School
Mike Hetzel, Athletic Director at West High School
Tom Ertel, Commissioner at Wauwatosa Board of Parks & Forestry
Bruce Johnson, Manager of Buildings & Grounds Department

INVENTORY OF CURRENT OUTDOOR ATHLETIC/RECREATIONAL RESOURCES

EISENHOWER ELEMENTARY SCHOOL	Play equipment, hard surface play area, recreational baseball diamond (1), football practice area
JEFFERSON ELEMENTARY SCHOOL	Play equipment, hard surface play area
LINCOLN ELEMENTARY SCHOOL	Play equipment, hard surface play area
MADISON ELEMENTARY SCHOOL	Play equipment, hard surface play area, recreational baseball diamond (1), recreational soccer fields (2)
MCKINLEY ELEMENTARY SCHOOL	Play equipment, hard surface play area, recreational ball diamonds (2), recreational soccer field (1)
ROOSEVELT ELEMENTARY SCHOOL	Play equipment, hard surface play area, recreational ball diamonds (2)
UNDERWOOD ELEMENTARY SCHOOL	Play equipment, hard surface play area, recreational ball diamond (1), official size hardball diamond (1), recreational soccer fields (2)
WASHINGTON ELEMENTARY SCHOOL	Play equipment, hard surface play area
WILSON ELEMENTARY SCHOOL	Play equipment, hard surface play area, recreational ball diamonds (2), recreational soccer field (1)
LONGFELLOW MIDDLE SCHOOL	Hard surface play area, recreational ball diamond (1), official size softball diamond (1), multi-purpose (football/soccer) field (1), recreational tennis courts (4)
WHITMAN MIDDLE SCHOOL	Hard surface play area, official size lighted softball diamonds (2), recreational soccer field (1), official size lighted soccer field (1), official size tennis courts (4)
EAST HIGH SCHOOL	Multi-purpose (soccer/physical education) field
WEST HIGH SCHOOL	Recreational baseball diamond (1), multi-purpose (soccer – 2)/track field events, physical education) area, lighted metric running track and official foot-ball field), official size tennis courts (8)
BREITLOW	Recreational baseball diamonds (2), official size hardball diamond (1), recreational soccer fields (2), official size tennis courts (2)

SCHEDULED SCHOOL DISTRICT & COMMUNITY USE OF ATHLETIC/RECREATIONAL RESOURCES

EISENHOWER ELEMENTARY SCHOOL	Physical education, recreation program baseball, Cyclone and West High School football practice
JEFFERSON ELEMENTARY SCHOOL	Physical education
LINCOLN ELEMENTARY SCHOOL	Physical education
MADISON ELEMENTARY SCHOOL	Physical education, youth soccer organizations
MCKINLEY ELEMENTARY SCHOOL	Physical education, recreational program baseball, youth soccer organizations
ROOSEVELT ELEMENTARY SCHOOL	Physical education, recreational program baseball
UNDERWOOD ELEMENTARY SCHOOL	Physical education, Tosa League and high school baseball programs, youth soccer organizations
WASHINGTON ELEMENTARY SCHOOL	Physical education
WILSON ELEMENTARY SCHOOL	Physical education, youth soccer organizations
LONGFELLOW MIDDLE SCHOOL	Physical education, Tosa League and East High School baseball/ Softball, Jr. Raider football, youth soccer organizations, recreational tennis
WHITMAN MIDDLE SCHOOL	Physical education, Tosa League recreational and West High baseball/softball, Cyclone football practice, youth soccer organizations and high school soccer, recreational and West High tennis
EAST HIGH SCHOOL	Physical education, youth soccer organizations and East High soccer
WEST HIGH SCHOOL	Physical education, recreational and Tosa League baseball/softball, Cyclone and West High football, youth soccer organizations and West High soccer, recreational and West High track and field programs, recreational and West High tennis
BREITLOW FIELD	Alternative school/physical education, recreational, Tosa League and high school baseball/softball, youth soccer organizations, recreational tennis.

The previous page are the approved/permitted uses of the District's outdoor recreational/athletic resources. There are other occasional approved users and numerous non-permitted recreational activities.

IMPROVEMENT RATIONALE

The committee reviewed the current use of District facilities and discussed current and future needs. In doing so, the committee agreed that priority must be given first to school district athletic programs; second, to recreation department programming; and finally, to additional community use. (This use would not compromise District programs or facilities.)

HISTORY OF OUTDOOR ATHLETIC FACILITY IMPROVEMENTS

UNDERWOOD ELEMENTARY SCHOOL	1990 – Upgraded the west ball diamond from a recreational use diamond to an official size baseball diamond for high school program use, provided some storage
LONGFELLOW MIDDLE SCHOOL	1990 – Improved the west recreational use ball diamond to accommodate East High School softball, including drainage, backstop and seating
WHITMAN MIDDLE SCHOOL	1994 – Construction of full dimension soccer field with seating for 500 for high school program. 1997 – Relocated and constructed two softball diamonds for high school and recreational use. 1998 – Added lighting to soccer stadium. 1999 – Added lighting to two softball diamonds. 1999 – Completely refurbished four tennis courts. 2000 – Constructed public restroom, concession, storage building.
WEST HIGH SCHOOL	1996 – Relocated and constructed baseball diamond for recreational use. 1998 – Completely reconstructed the metric running track and installed an automated irrigation system in the football field. 2002 – Installed stadium seating for 1,000 spectators, including a press box. 2003 – Regraded the multi-purpose turf areas north/northwest of the stadium for soccer, football and track field event programs. This included a manually operated irrigation system, storage garage and improved shot put and discus areas. 2005 – Installed lighting for the stadium.
BREITLOW FIELD	1987 – Construction of two tennis courts with a hard surface basketball court. 1990 – Reconstructed a recreational use baseball diamond to an official size high school baseball diamond. This included limited seating (100), enclosed fencing to create a stadium, scoreboard and later, a batting cage. 2000 – Construction of a building with public restrooms and equipment storage. 2002 – Upgrade of play equipment near the tennis courts.

DESCRIPTION OF AREAS RECOMMENDED FOR IMPROVEMENTS

UNDERWOOD ELEMENTARY SCHOOL

Improvements would include regrading the site to provide usable recreational soccer in the northwest part of the site, improving the existing northeast official baseball diamond to assist with drainage, netting, backstop, and installation of seating and storage.

LONGFELLOW MIDDLE SCHOOL

Improvements would include reconstruction of the existing tennis courts (4); making them official size and maintaining their approximate location on site, construction of a lighted softball/baseball diamond to replace the existing recreational diamond, relocating the hard surface play area, provide improved irrigation, baseball/softball storage and seating.

WEST HIGH SCHOOL

Continue to improve the site by constructing a building for public restrooms, concession operation and team/official assembly, add visitor seating and expand home seating capacity, reconstruct the tennis court, including lighting.

BREITLOW FIELD

Construct an additional official size baseball stadium (like the existing stadium) north of the current stadium, improve storage, increase seating and consider player bench protection and lighting, relocate tennis courts (2) and make provision for recreational/athletic use parking.

NOTE: EAST HIGH SCHOOL

Plans are currently being made for an automated irrigation system and turf improvements for the multi-use space north of the school.

PRIORITIZATION OF RECOMMENDED IMPROVEMENTS

Priority #1	West High School	Restroom/Concession Building including access pathway/s, fencing
Priority #2	Breitlow Field	Additional official baseball diamond; relocation of tennis courts, parking
Priority #3	Longfellow Middle School	Lighted softball diamond construction, including relocation of tennis courts and hard surface play area
Priority #4	Underwood Elementary School	Regrading/construction of soccer field, northwest
Priority #5	West High School	Reconstruction of tennis courts, including lighting
Priority #6	Breitlow Field	Addition of lighting and storage

MISCELLANEOUS IMPROVEMENTS (NOT PRIORITIZED)

Underwood Elementary School	Baseball (NE) improved drainage, storage, seating, netting
Longfellow Middle School	Improved irrigation and additional storage
West High School	Visitor seating, additional home seating
Breitlow Field	Additional storage, seating, improved drainage, player bench Protection

BUDGET ESTIMATES

A. West High School - Future Site Improvements

ITEM	SUBTOTAL
▶ Add 500 bleacher seats to home (west) side incl. 2 vomitories	

\$110,000.00

A. West High School - Future Site Improvements (continued)

▶ Add 500 bleacher seats to visitor (east) side		
	stadium layout	\$105,000.00
	bleacher layout	\$85,000.00
▶ Add 750 bleacher seats to visitor (east) side		
	stadium layout	\$140,000.00
	bleacher layout	\$120,000.00
▶ 8 Tennis Courts - Reconstruction		\$175,000.00
▶ Tennis Court Lighting		\$80,000.00
▶ Restroom/Concession Building w/ locker area and meeting rooms		\$300,000.00 - \$450,000.00
▶ Entry gateway w/pathway, fencing, donor amenities, signage, banners		\$100,000.00 - \$200,000.00

B. Longfellow Elementary School Site Improvements

<u>ITEM</u>	<u>SUBTOTAL</u>
Tennis Courts	
▶ 4 Tennis Courts, fencing, net, etc.	\$110,000.00
▶ Grading and retaining walls, ADA ramp	\$40,000.00
▶ Tennis Court Lighting	\$40,000.00
▶ Landscape	\$10,000.00
TOTAL	\$200,000.00
 Softball field	
▶ Softball field w/ equip., grading, infield, fencing, backstop, etc.	\$55,000.00
▶ Lighting - Softball Field	\$85,000.00
▶ Bleachers - 250 seats	\$25,000.00
▶ Irrigation - Softball Field	\$10,000.00
TOTAL	\$175,000.00
▶ Irrigation - Existing Multi-Purpose Field	\$15,000.00
▶ Hard Surface Play Area renovation <i>New: asphalt paving, striping, fencing, grading, landscape</i>	\$45,000.00
▶ Misc. asphalt paths, stairs, new asphalt paving @ bldg.	\$65,000.00
▶ Storage Facility (24' X 40')	\$20,000.00
TOTAL	\$145,000.00

C. Underwood Elementary School Site Improvements

ITEM	SUBTOTAL
Soccer Field	
▶ U12 Or U10 Soccer Field - west side strip topsoil, re-grade, seed	\$40,000.00

D. Breitlow Site Improvements

ITEM	SUBTOTAL
90' Baseball Field	
▶ Baseball field w/ equip., grading, infield, fencing, backstop, etc.	\$150,000.00
▶ Bleachers - 500 seats	\$48,000.00
▶ Irrigation - Baseball Field	\$15,000.00
TOTAL	\$213,000.00
▶ 2 Tennis Courts, fencing, net, etc.	\$44,000.00
▶ Asphalt parking lot - 26 spaces	\$25,000.00
▶ Miscellaneous demo, regrading, topsoil, seeding	\$10,000.00
TOTAL	\$79,000.00

Additionally, on-going maintenance and minor improvements are required to maintain District facilities.

Examples: fertilization, aeration, weed/pest control, irrigation, top-dressing, over seeding, mowing of all turf areas.

Top dressing, combo planing of baseball/softball diamond skinned areas.

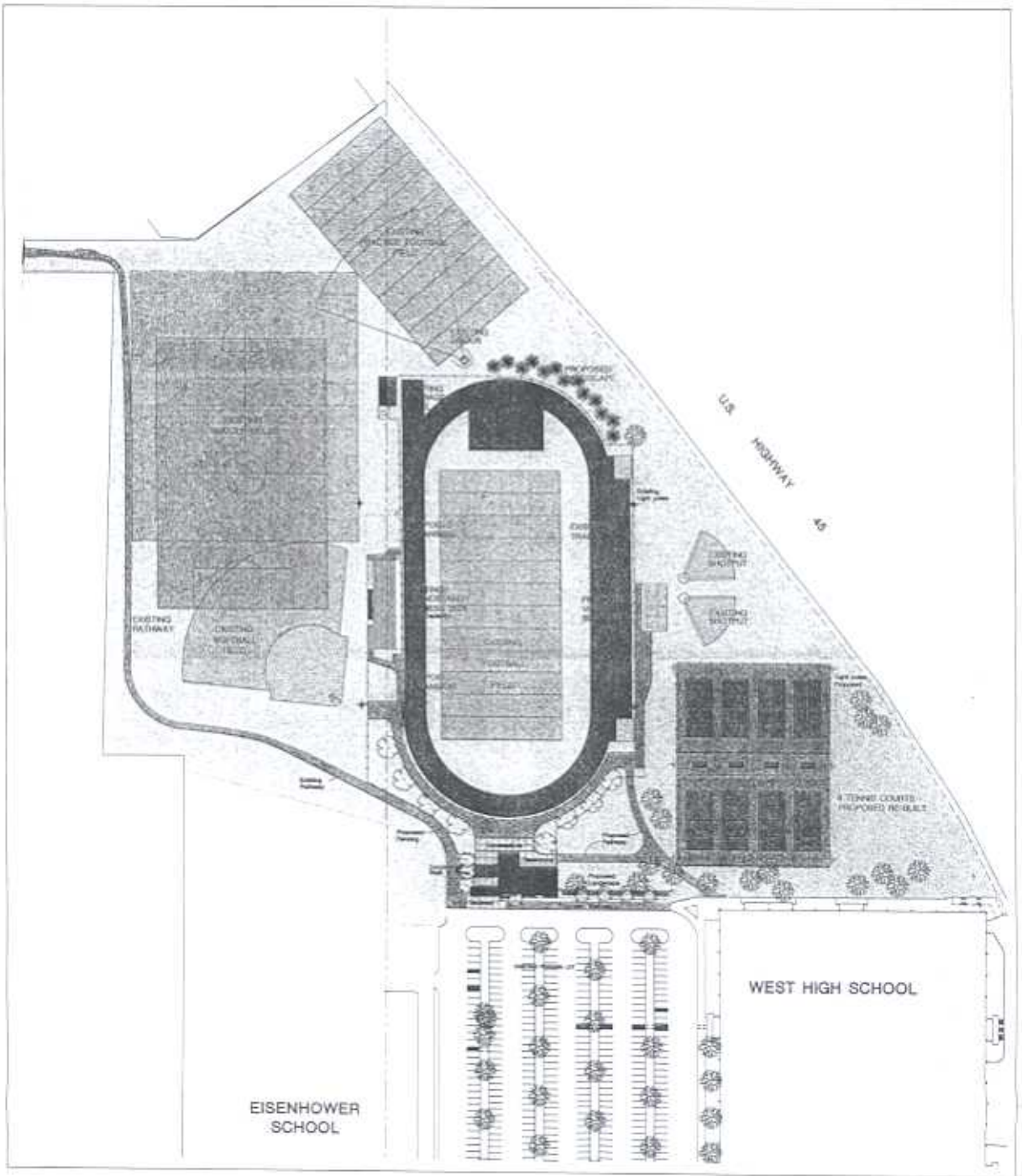
Sealcoating, crackfilling, re-lining of tennis courts, running track and hard surface play areas.

Maintenance of seating, lighting, fencing, netting, outbuildings, public address systems and miscellaneous equipment.

SUMMARY: It was a pleasure to work with the committee and the additional input received from many other residents of our community was appreciated.

Maintaining and improving the District's outdoor athletic and recreational facilities is a challenging, but worthwhile commitment.

Wauwatosa is short on quality recreational space, has high levels of participation in recreational activities and these recommendations further our commitment to providing quality programs for our students and the community.



West High School

Proposed Site Improvements

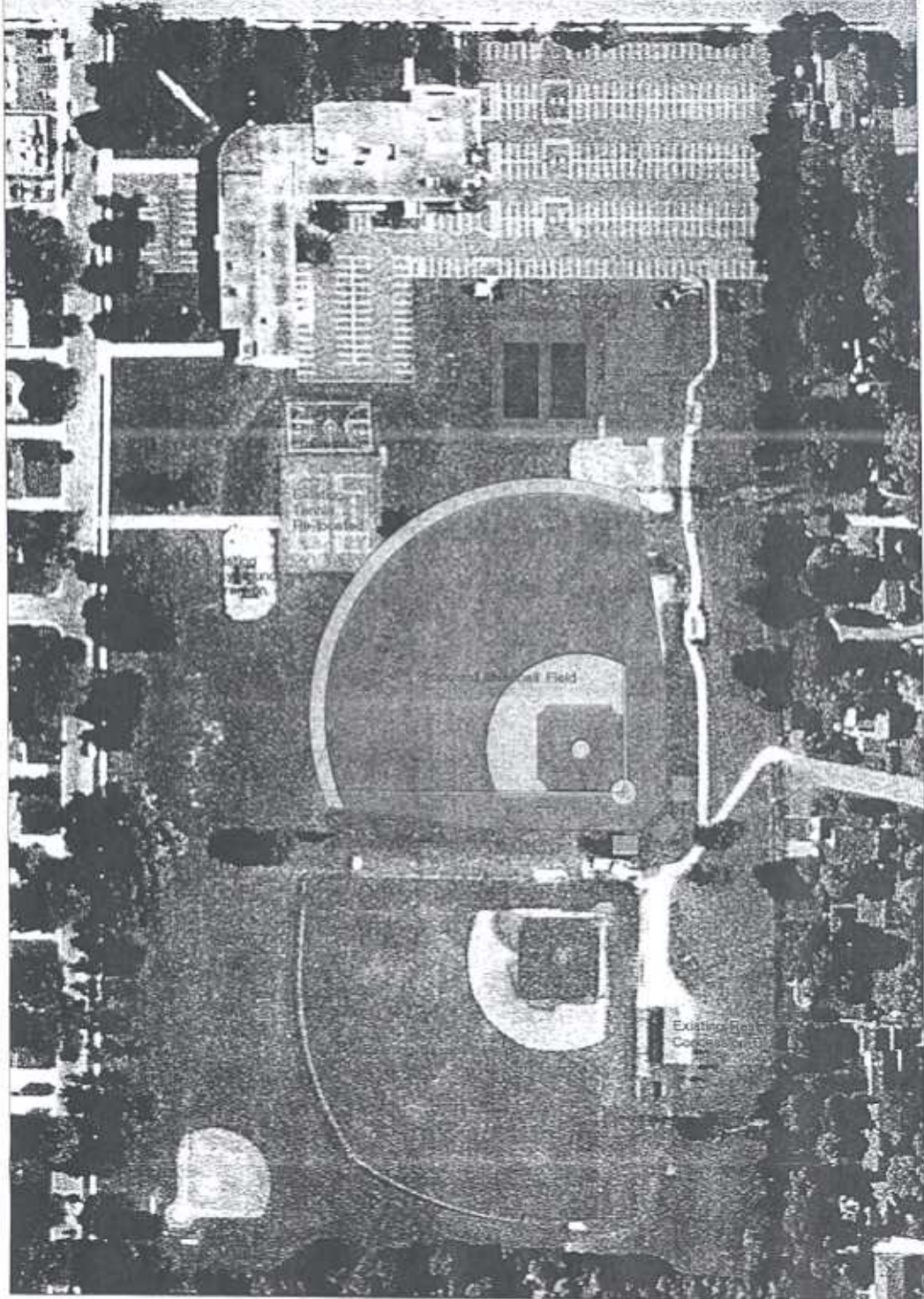
Wausau, Wisconsin

April 24, 2006

An International Design Group



Not to Scale



Breitlow Field Site

Athletic Field Master Plan

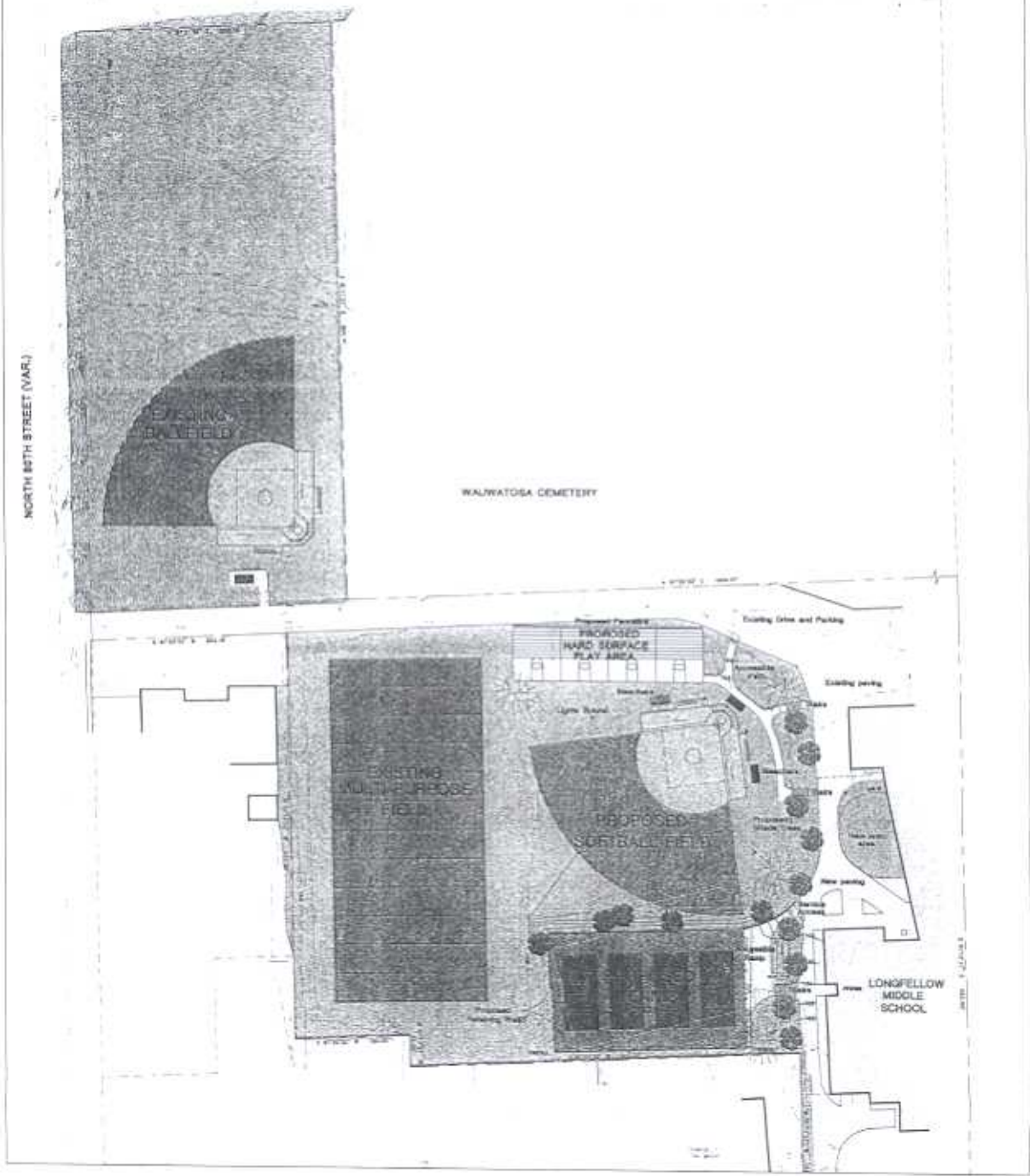
Wausau, Wisconsin

April 24, 2006

by  Planning Firm, Inc.



Scale: 1" = 40'-0"



Longfellow Middle School

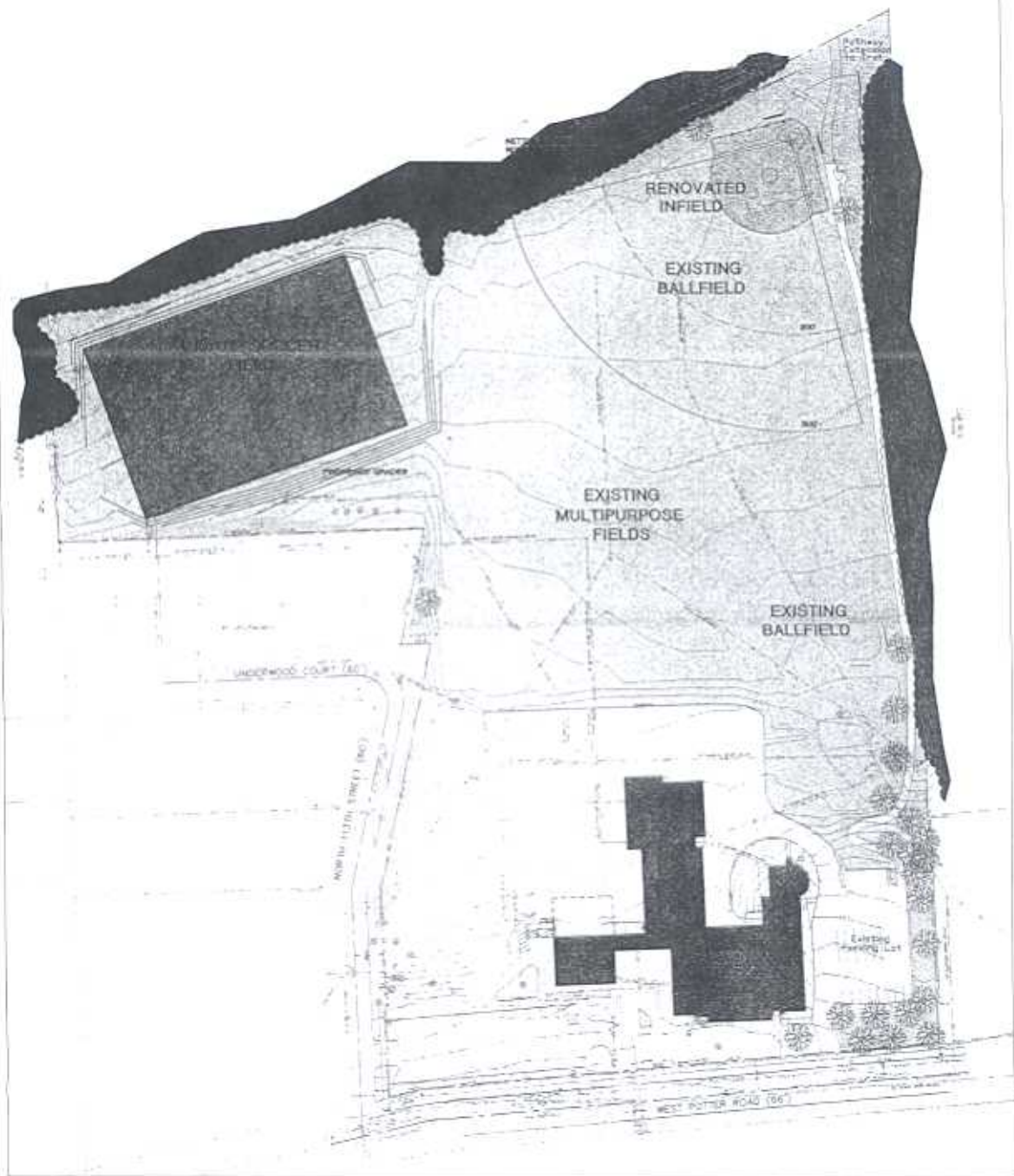
Athletic Fields Master Plan

Wauwatosa, Wisconsin
April 24, 2006

By: [Logo] [Firm Name]



Scale: 1" = 40'-0"



Underwood Elementary School

Athletic Field Master Plan

Wausau, Wisconsin

April 24, 2006

By Christopher Design Group



Scale: 1" = 40'-0"